

CR-Scan Raptor

Hybrid Blue Laser & NIR, Metrology Grade Accuracy

7 Laser Lines

Metrology Grade Accuracy

The Accuracy under Blue light mode can achieve up to 0.02 mm.

7 parallel blue laser lines for fine scanning details, single laser line is very thin, up to 0.1 mm to obtain sharper and clear edges.



Infrared Structured Light Scanning

The CR-Scan Raptor utilizes speckle matching 3D imaging, No markers needed for feature-rich workpieces. Objects can be scan quickly and directly.

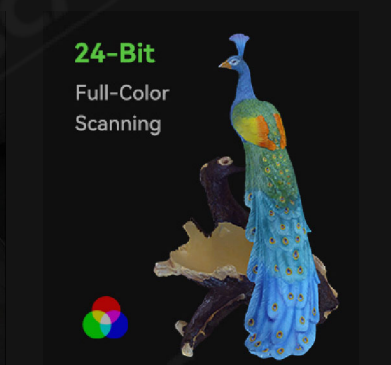


Versatile Scanning for All sizes

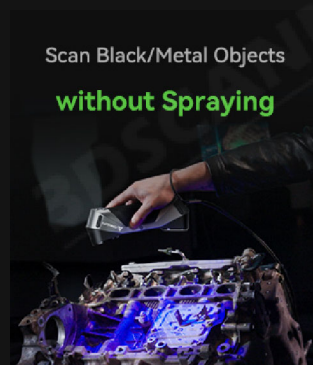
Combining line lasers with infrared structured light, the CR-Scan Raptor can scan objects ranging in size from 5*5*5 mm³ - 2000*2000*2000 mm³. Effortlessly scanning small figurines, bolts, faces, human bodies, automobile components, and more.



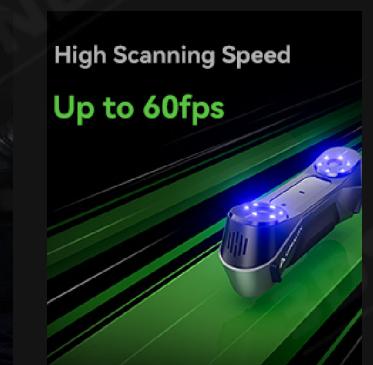
Anti-shaking
for Smooth Scanning



24-Bit
Full-Color
Scanning



Scan Black/Metal Objects
without Spraying



High Scanning Speed
Up to 60fps



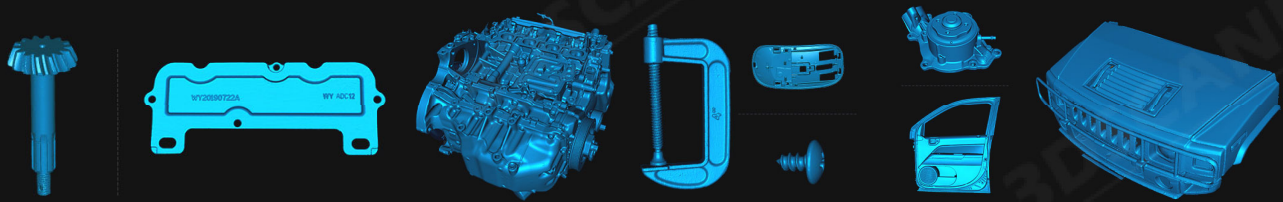
02-899-5770



@3dscanners_th



www.3dscanners.co.th



Specifications

Scanning Mode:	7 blue parallel laser lines	NIR(infrared binocular structured light)
Accuracy:	Up to 0.02mm @ 100mm [1]	Up to 0.1mm
3D Resolution:	0.02-2mm	0.1-2mm
Scanning Speed:	Up to 60fps	Up to 30fps
Min. scanvolume:	5mm x 5mm x 5mm	150mm x 150mm x 150mm
Single Capture Range:	270mmx170mm@300mm	665mmx574mm@1000mm
Working distance:	150mm-400mm	170mm-1000mm
Color Mapping:	Yes	Yes
Alignment mode:	Marker	Marker / geometry / texture
3D imaging camera resolution:	1920x1200	
Color Supplemental Light:	12 white LEDs	
Marker Recognition Enhancement:	12 blue LEDs	
Laser Safety:	Class I (eye safe)	
Button:	Mechanical	
IMU:	Yes	
Output format:	OBJ/STL/PLY	
Input Power:	12V 2A	
Data interface:	TypeC/USB3.0	
Device Dimensions:	215mmx50mmx74mm	
Device Weight:	372g	
Calibration board:	High-precision glass calibration board	
System Support:	Windows 10/11 (64 bit): i7-Gen7, Nvidia graphics card (6GB video memory), 16GB memory or higher macOS: 11.7.7 and above, Apple M1/M2/M3 series processors; RAM: 16GB or higher	
Wireless Scanning:	Supported in conjunction with Scan Bridge	
Operating temperature:	-10°C to 40°C	
Operating humidity:	0-90%RH	

[1] Accuracy is evaluated in laboratory conditions (measurement object is 100mm sphere pair) and actual results may be affected by operating environments such as temperature, vibration, and other factors.



02-899-5770



@3dscanners_th



www.3dscanners.co.th