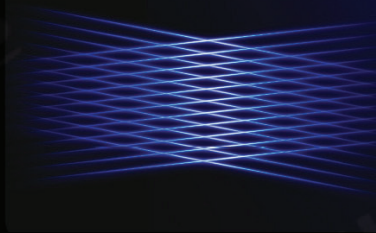


Creality Raptor Pro

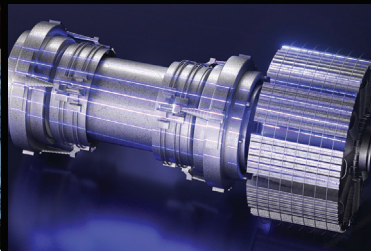


22 Cross Laser Lines



Provide comprehensive coverage for **medium/large objects**, minimizing the need for multiple passes or redundant scans.

7 Parallel Laser Lines



Each laser line is as fine as **0.1 mm**, capturing sharper edges and richer details.

NIR Structured Light



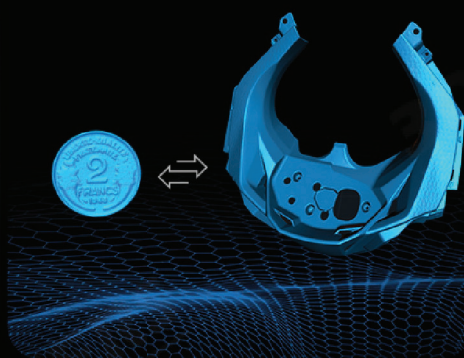
- No Marker need for feature-rich workpiece
- Unique Face and Body Algorithm

Features

Volumetric Accuracy :
0.02mm+0.08mm/m



Objects between:
0.2-157" / 5-4000mm



Scan Black/Metal Objects without Sprays



**High Scanning Speed Up to 60fps,
660,000 points/s**



**NIR Scanning up to 30fps
24-Bit Full-Color Scanning**



02-899-5770



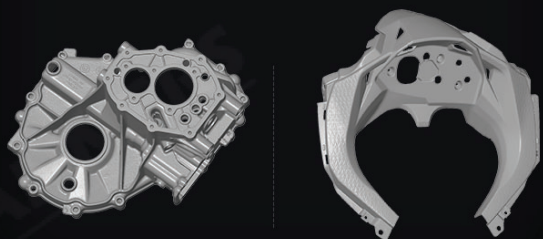
@3dscanners_th



www.3dscanners.co.th

Applications

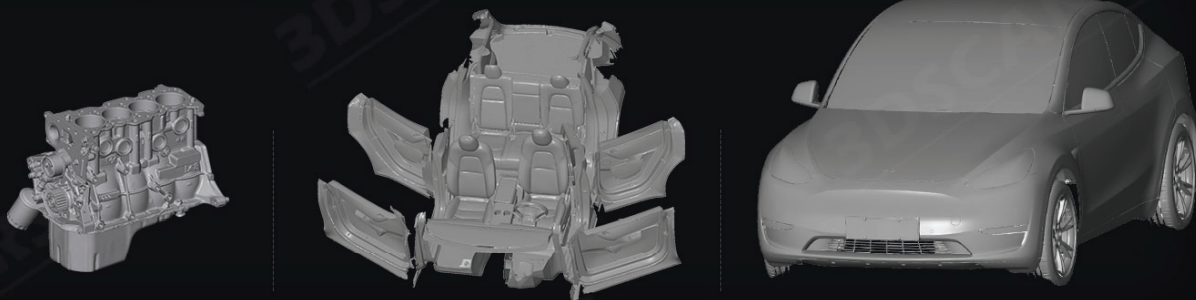
Reverse Engineering



Inspection



Automotive



Manufacturing



Art & Antique



Specification

Scanning Mode	7 blue parallel laser lines	22 cross blue laser lines	NIR(infrared binocular structured light)	Working distance	160mm-400mm	200-550mm	170mm-1000mm
Accuracy, up to	Up to 0.02mm		Up to 0.075mm	Outdoor Scanning	Below 50,000 lux	Below 10,000 lux	Below 30,000
Volumetric Accuracy	0.02mm+0.08mm/m		0.075mm +0.1mm/m	System Support	Windows 10/11(64 bit):i7-Gen10 and above, Nvidia graphics card (8GB video memory and above), 32GB memory and above Minimum: i7-Gen7, Nvidia graphics card (6GB video memory), 16GB memory macOS: 11.7.7 and above, Apple M1/M2/M3 series processors; RAM: 16GB and above		
Scanning rate	420,000 measurements/s	660,000 measurements/s	3,580,000 measurements/s	Wireless Scanning	Supported in conjunction with wireless scanning accessories		
Single Capture Range	270mmx 170mm @300mm	270mm x 170mm @300mm 341mm x 232mm @400mm 397mm x 290mm @500mm	630mmx550mm @1000mm				



02-899-5770



@3dscanners_th



www.3dscanners.co.th