



EinScan *Rigil* Series

The Tri-Mode Laser 3D Scanner

Rapid · Refined · Reliable

25+25 Crossed Laser Lines

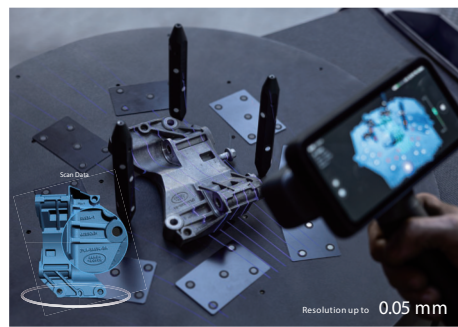
For high-speed scanning, delivers top-tier efficiency and flexibility.

*EinScan Rigil Lite: 17+17 crossed laser lines



7 Parallel Laser Lines

For fine details, provides consistent results.



IR Rapid

VCSEL Infrared-medium to large objects, with eye safe portrait scanning.



Triple Work Modes

Unlock MAX Performance And Flexibility

Standalone Mode

Standalone operation. Onboard processing ensures maximum portability and ease of use.

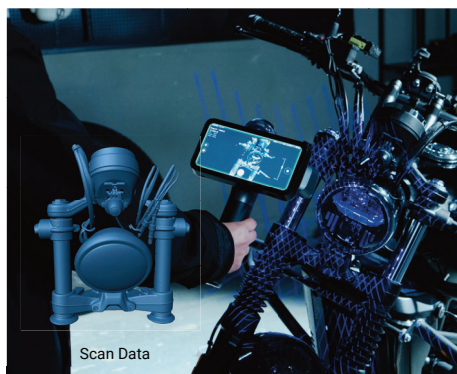
Wireless PC Mode

Standalone or Wi-Fi 6 linked to a powerful computer for maximum flexibility and performance.

Wired PC Mode

Maintains maximum scanning speed and data volume in demanding network environments.

Marker-Free Laser Scanning



5MP Full Color Texture Scanning



Scan to Design Bridging Reality to Digital



Applications



TECHNICAL SPECIFICATIONS

EinScan Rigil Series

Work Mode	Standalone / PC- Wireless / PC-Wired (for extra computing resource)		
Scan Mode	Laser HD		IR Rapid
Light Source	EinScan Rigil	EinScan Rigil Lite	IR VCSEL
	25+25 crossed laser lines	17+17 crossed laser lines	
	7 blue laser parallel lines		
Volumetric Accuracy	Up to 0.04 + 0.06 mm/ m	/	Up to 0.1 + 0.4 mm/m
Resolution	0.05 ~ 10 mm		0.2 ~ 10 mm
Scanning Speed	4,800,000 points/s	2,940,000 points/s	16,000,000 points/s
Working Distance	170 ~ 550 mm		160 ~ 1500 mm
Alignment Mode	Global Markers / Markers / Features		Global Markers / Markers / Features / Texture / Hybrid
Camera Resolution	3D: 2.3MP*2 1.3MP*2; Texture: 5MP		
Output Formats	STL, OBJ, PLY, 3MF, ASC		
Laser Class	Class II		/
Hardware	EinScan Rigil: CPU: 8-core, 2.4GHz; RAM: 32GB LPDDR5; Storage: 64GB eMMC + 1TB SSD; 6.4-inch 2K AMOLED Touchscreen EinScan Rigil Lite: CPU: 8-core, 2.4GHz; RAM: 24GB LPDDR5; Storage: 64GB eMMC + 512GB SSD; 6.4-inch 2K AMOLED Touchscreen		
Operation Conditions	Temperature -10°C ~ 40°C		
Certifications	CE, FCC, ROHS, WEEE, FDA, SRR, IP50		
Recommended Configurations for PC	OS: Win11 (64-bit); Processor: 13th Gen Intel®Core™ i7-13700H or above; Graphics card: NVIDIA GeForce RTX 3060 Laptop GPU or above; VRAM: 8 GB or above;RAM: 64 GB or above, DDR5 dual-channel; Interface: USB 3.0;		
Interface & Power Source	USB Type-C Battery: 5500mAh*2; Support 60W-PD3.0 Charger		
Dimension	(H*D*W) 233 × 180 × 72.8 mm		
Net Weight	870 g (batteries included)		